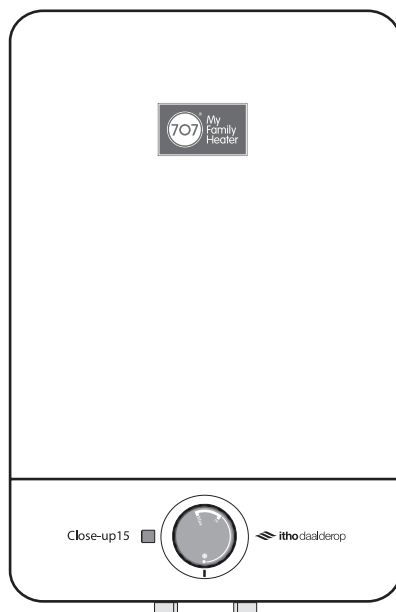


User Manual & Installation Guide

Electric Storage Water Heater

Close-up15



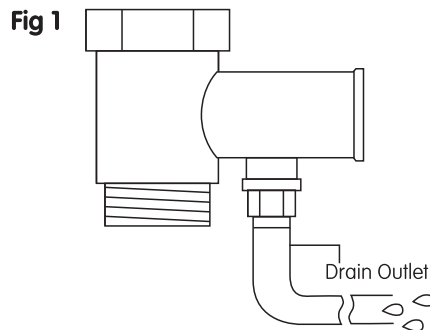
- This booklet should be retained by the user after installation.
- This product is for residential use only.
- Installation must be done by qualified or approved personnel only.

Contents

S/N	Contents	Page
1	Safety Precautions	2
2	Packaging Contents	4
3	About Electric Storage Water Heater	5
	3.1 Introduction	5
	3.2 Product Parts	6
	3.3 Features	7
	3.4 Electrical Storage Water Heater Connections	8
	3.5 Circuit Diagram	9
4	Site Requirements - Plumbing & Electrical	10
5	Product Installation	11
	5.1 Wall Mounting	11
	5.2 Plumbing Connections	12
	5.3 Testing Plumbing Connections	13
	5.4 Electrical Connections	14
	5.5 Testing Electrical Connections	15
6	Operating Instructions	16
7	Troubleshooting	17

1. Safety Precautions

- Children, elderly, physically disabled or any individual with reduced physical, sensory, or mental capabilities, or lack of experience in operating the water heater safely, should not be allowed to use the water heater without supervision. Children must be supervised to ensure that they do not play with the water heater.
- Do not use water heater if water pressure is less than 0.1MPa or higher than 0.6MPa.
- The water heater must be permanently connected to the electricity supply through a double pole linked switch having a contact separation of at least 3mm in all poles incorporated in the circuit and out of reach of the person using the shower.
- The water heater is intended to be permanently connected to the water mains and not connected by hose-set.
- The water heater must be installed with a non-return pressure relief valve (PRV) at the cold water inlet (blue indicator) to prevent backsiphonage into the water mains. When the tank water pressure is over 0.8MPa, this will automatically activate the PRV. Water will exit at the drain outlet (refer Fig 1). In any condition, this outlet must not be blocked.



- Connect the drain outlet hole to a discharge pipe. Water may drip from the discharge pipe of the PRV, therefore this pipe must be exposed to the atmosphere.
- The PRV is to be checked regularly (preferably at least every six months) to remove lime deposit and to ensure that it is not blocked.

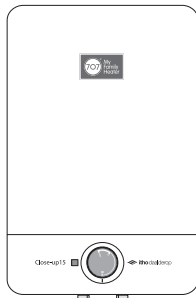
- If there is a need to drain water from the water heater, please:
 - Switch off the power supply.
 - Turn on mixer tap to release hot water and allow cold water to fill the tank. Ensure sufficient water is released and the remaining water in the tank is not hot to avoid scalding.
 - Turn off the water mains connecting to the cold water inlet of the water heater.
 - Remove the PRV and inlet pipe connection to drain the water from the tank.
 - Seek assistance from qualified person if you are unsure of how to drain the water heater.
- The water heater should only be operated with all safety devices fitted and functioning.
- The water heater should be serviced periodically by a qualified service technician.
- All repairs and servicing must be done by a competent and qualified service technician.

Stop using immediately when:

- Water heater is damaged
- Any accessory is damaged
- No water flow during operation
- Water heater functions significantly different from usual operation

Turn off storage heater, water supply and heater switch and contact us for assistance if any of the above occurs

2. Packaging Contents



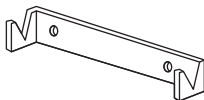
Electric Storage Heater Unit



Wall Mounting Accessories



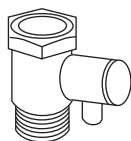
Wall Plugs



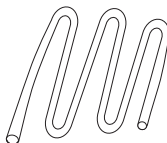
Wall Mounting Bracket



Fixing Screws



Pressure relief
valve (PRV)



PRV drain hose



Instruction
manual

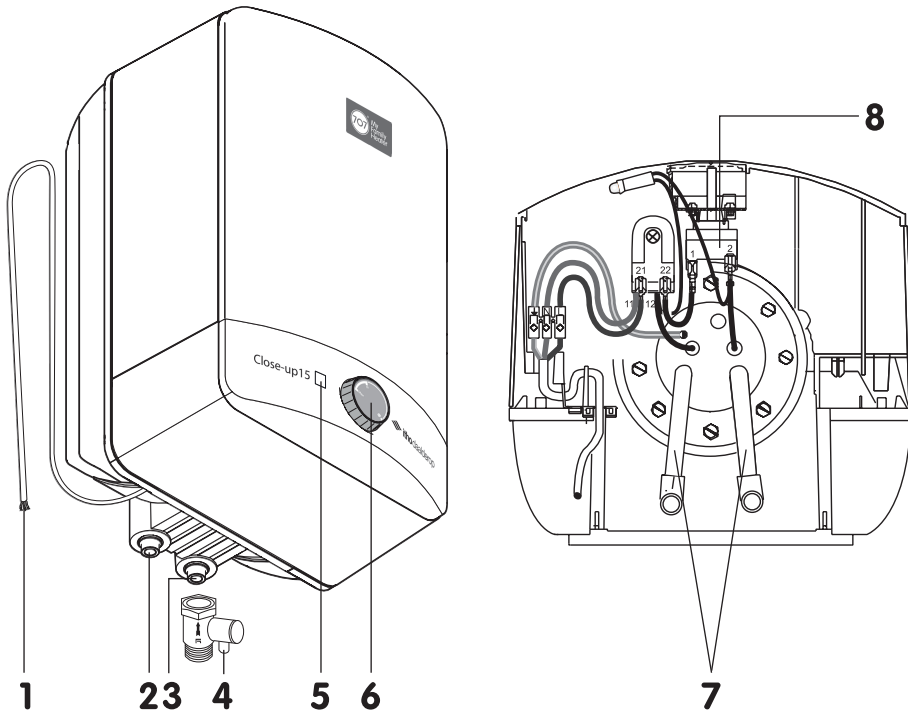
3. About Electric Storage Water Heater

3.1 Introduction

707 Close-up15 Electric Storage Water Heater is intended for heating water to the temperature suitable for residential and non-commercial use.

Brand	707
Model	Close-up 15
Capacity	15 litres
Dimensions (L x H x W)	300 x 452 x 285mm
Weight (Empty)	7.5kg
Power rating	2200W, 230V a.c. 50Hz
Ingress protection rating	IP24
Rated pressure	0.8MPa (8 bar)
Inlet and outlet water connection	Ø 15mm (1/2" BSP)
Permissible inlet water pressure	0.1 – 0.6MPa (1-6 bar)
Structure mode	Hermetically closed water storage style

3.2 Product Parts



Electric Storage Heater Unit

1. 3 core power cable
2. Hot water outlet
3. Cold water inlet
4. Pressure relief valve
5. Power Indicator
6. Temperature control knob
7. Heating element
8. Thermostat & Thermal cut-out

3.3 Features

- **Made in Holland**

Meticulously made to exhibit our pledge for quality.

- **100% Copper Tank**

Made from superior material for longer lifespan.

- **Corrosion Resistant**

Requires no protective anode as pure copper is highly resistant to corrosion.

- **Copper Heating Element**

High thermal conductivity for performance and durability.

- **Thermal Insulation**

Minimises heat loss for greater energy savings.

- **IP24 Splash Proof Rating**

Designed and built with splash-proof safety standard that protects the internal circuits.

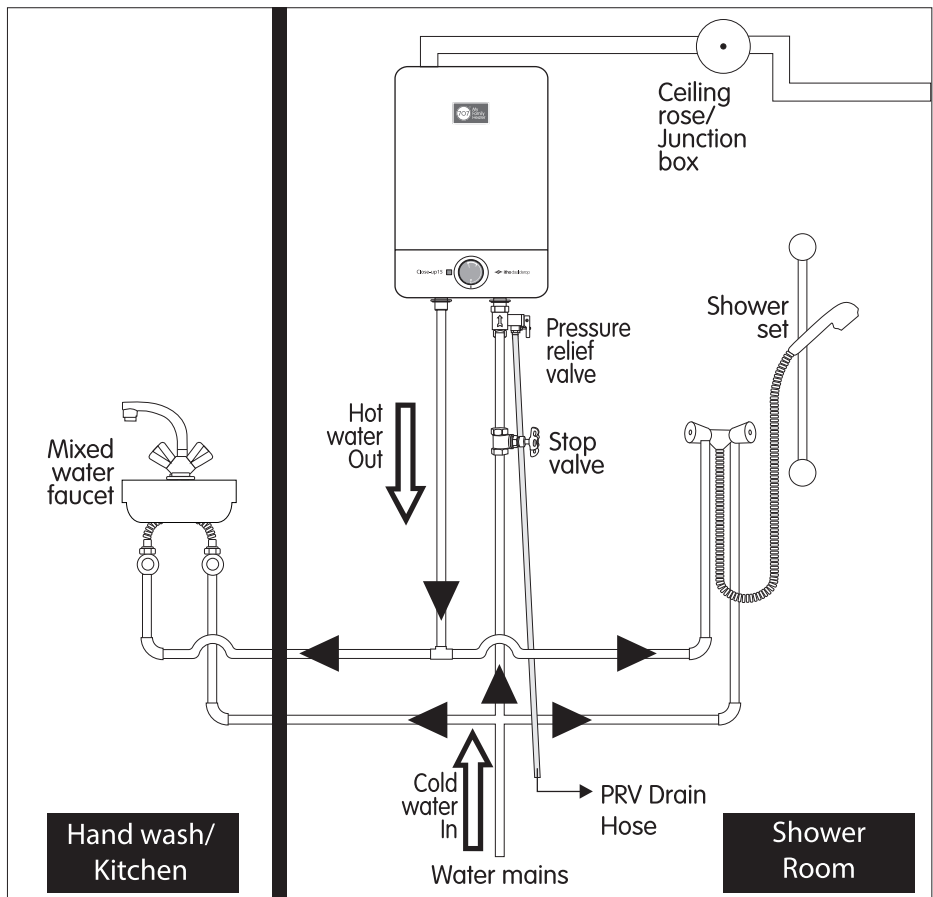
- **Safety Protection**

Cut off power supply when temperature reaches unsafe level.

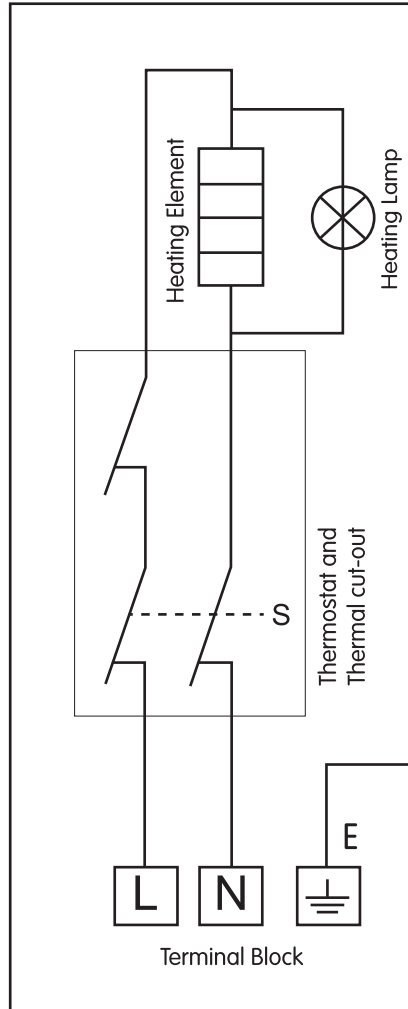
- **International Standards**

Compliance with international standards required by IEC.

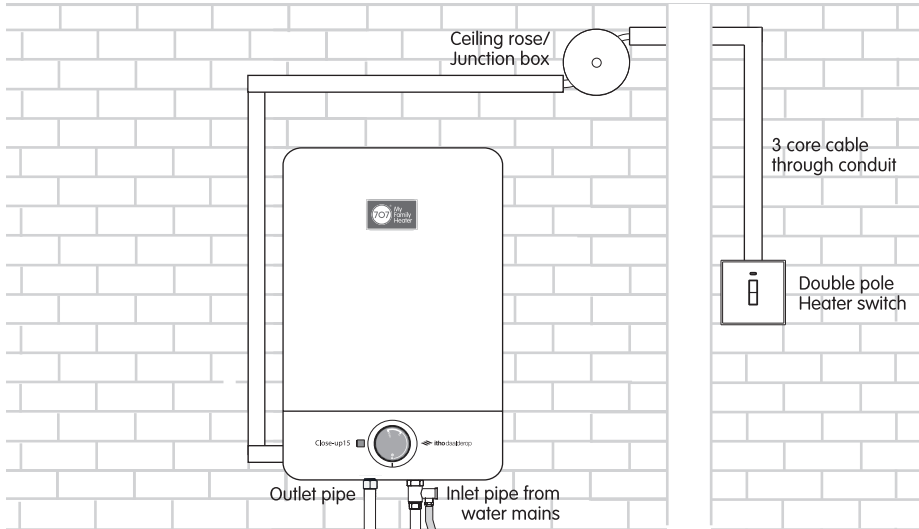
3.4 Electric Storage Water Heater Connections



3.5 Circuit Diagram



4. Site Requirements -Plumbing & Electrical



Please check that a 20 amps double pole heater switch with a minimum contact gap of at least 3mm in both poles is connected directly to the mains and installed outside the bathroom.

Please ensure that the ceiling rose/junction box is rated 20 amps.

Pressure of water supply from mains should be at least 0.1 MPa (1 bar) and it should not exceed 0.6 MPa (6 bar)

Please proceed with installation only if you meet the above site requirements.

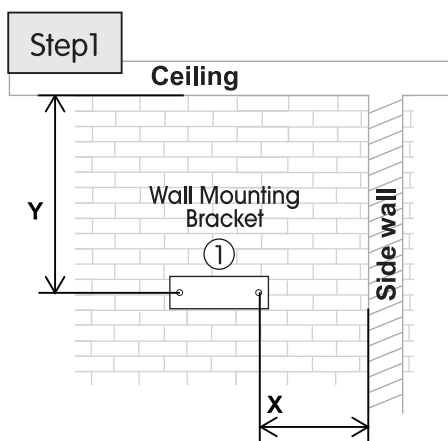
Materials and tools needed for installation:

- Conduit
- Copper pipes and/or flexible hoses
- Spanner
- Power drill
- Hammer
- Cross head screw driver
- Flat head screw driver
- Marker

5. Product Installation

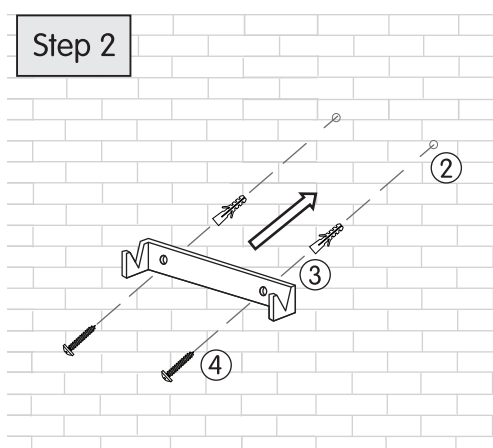
5.1 Wall Mounting

- The electrical storage water heater should be mounted on a solid cement wall preferably where it is close to the power source sockets and water source.
- The installation for electrical and plumbing work must be done only by qualified personnel according to the installation instructions and in compliance to the local authority regulations.
- Unit has to be installed as near as possible to the service points, in order to reduce heat loss along the pipes.
- An additional stop-valve must be fitted in the mains water supply to the heater as an independent means of isolating the water supply should maintenance or servicing be necessary.



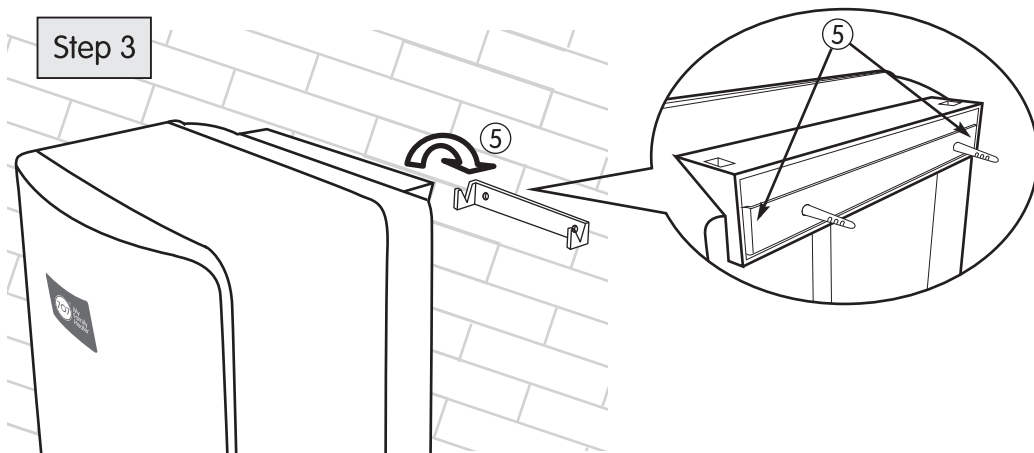
	X (mm)	Y (mm)
Close-up15	min. 280	min. 230

- Position the wall mounting bracket on to the wall as per the dimensions given and mark the holes in the bracket (1).



- Drill holes as per markings (2).
- Insert wall plugs into the holes (3).
- Mount the bracket using fixing screws (4).

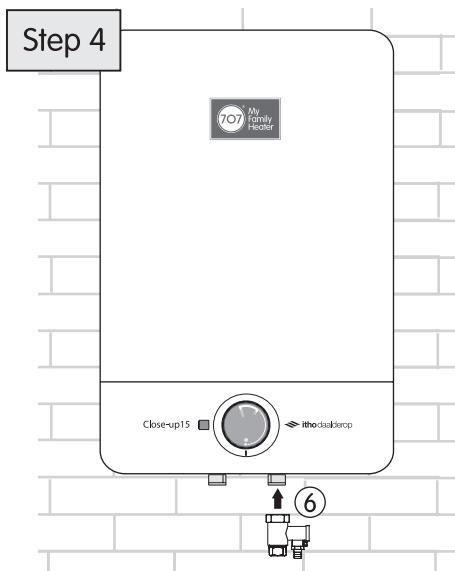
Step 3



- Hang the heater unit on to the bracket and ensure the protruding ends are properly inserted in the middle of the 2 slots of the heater casing (5).

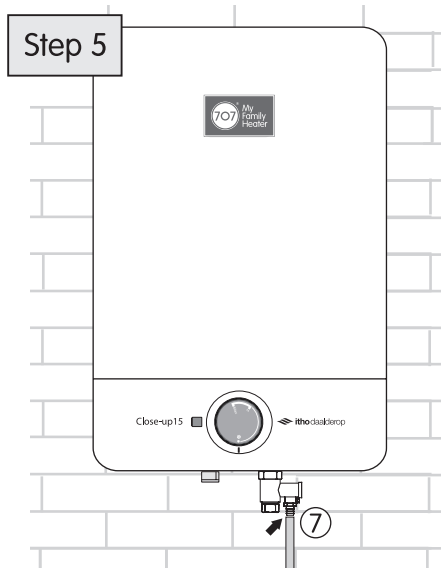
5.2 Plumbing Connections

Step 4

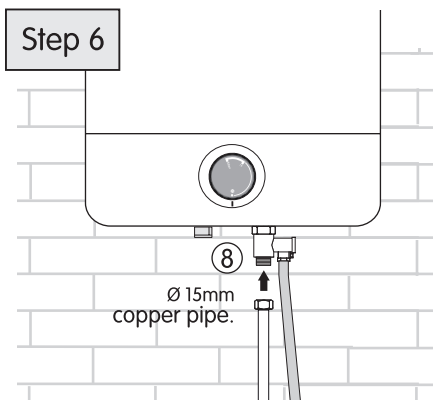


- Connect Pressure Relief Valve (PRV) to the cold water inlet (blue indicator) of the heater (6).

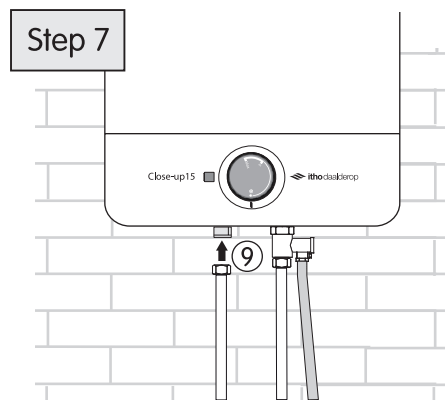
Step 5



- Insert the PRV drain hose to the PRV drain outlet to guide any water from PRV to the drain discharge pipe (7).



- Connect the water supply to the PRV using right sized copper pipe⑧.

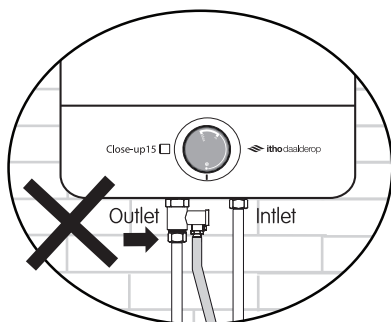


- Connect the hot water outlet pipe (red indicator) to the mixed water faucets⑨.

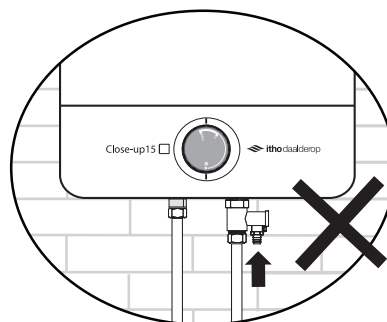
5.3 Testing Plumbing Connections

- Turn on the water supply to fill the tank fully and check all connections for leakage. Rectify if there is any leakage found.
- Check each outlet for good water flow. Contact us for advice if water flow is abnormal.

Common errors to avoid in plumbing connections:



- Do not connect PRV to the outlet.

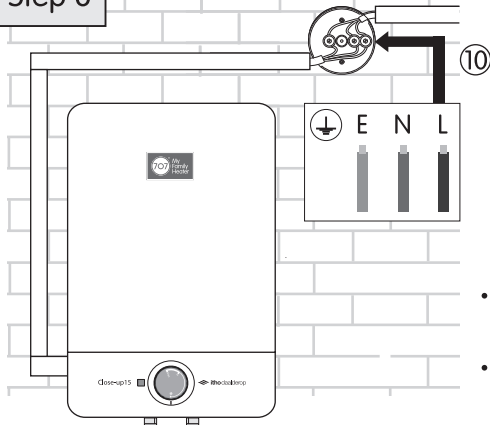


- Do not forget to install PRV drain hose.

5.4 Electrical Connections

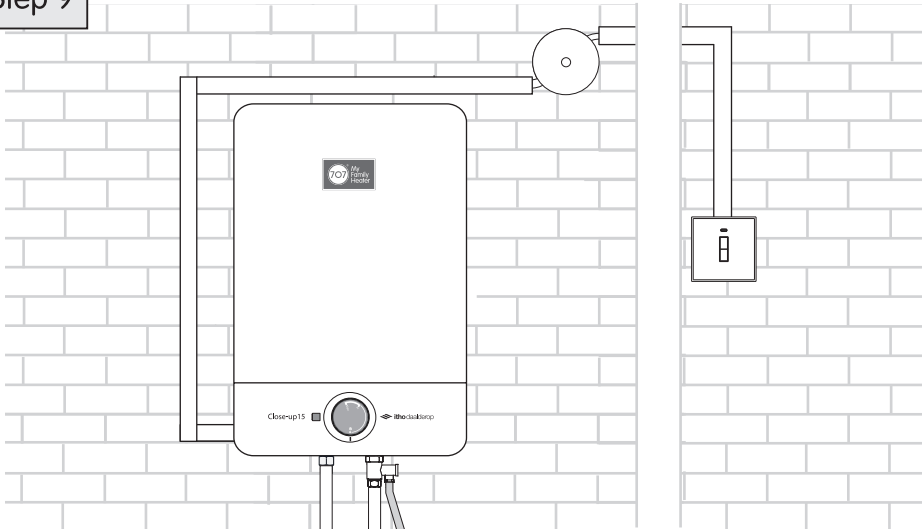
- Proceed with electrical connections only after completing plumbing connections.

Step 8



- Connect 3 core power cable to ceiling rose/junction box (10).
- Use conduit to secure the cable.

Step 9

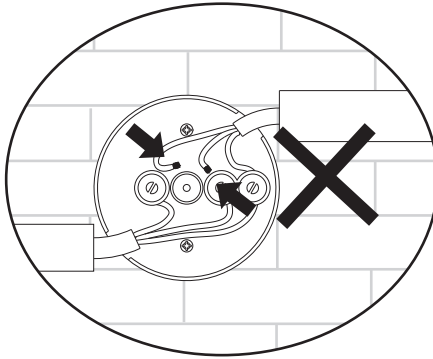


- Upon completion of installation, heater assembly will look like the above.

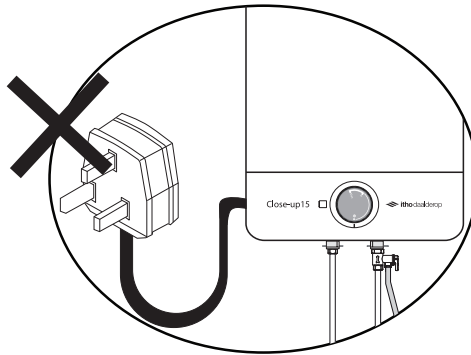
5.5 Testing Electrical Connections

- Check tank is fully filled with water.
- Turn on heater switch and temperature control knob.
- Wait for 15 minutes and test for hot water. Make sure that the tank is fully filled with water, otherwise it will cause the heating elements to be damaged.

Common errors to avoid in electrical connections:



- Avoid loose electrical connections.



- Do not use 3 pin power plug and socket for electrical connections.

6. Operating Instructions

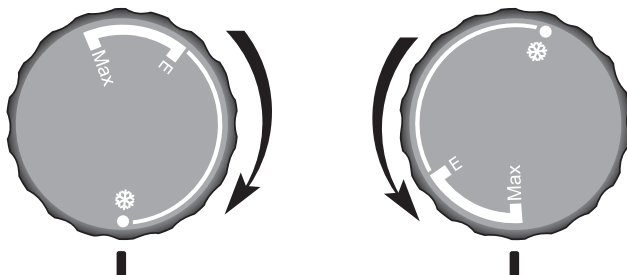
To turn ON storage heater:

- Turn on heater switch.
- Make sure that the tank is fully filled with water, otherwise it will cause the heating elements to be damaged.
- Turn on your mixer faucet to use the heated water.

Model	Estimated time to reach acceptable temperature
Close-up15	15 minutes

To adjust water temperature:

- Turn the temperature control knob clockwise towards [MAX] to increase the temperature and counter-clockwise to decrease the temperature.



To turn OFF storage heater:

- Turn off heater switch.

7. Troubleshooting

Symptom	Possible causes	Solution
No hot water/ indicator light does not light up	No power supply	Engage a qualified electrician for assistance
	Indicator light faulty	Contact 707 customer care for assistance
Electric mains tripped	Heating element faulty	Stop using the water heater immediately. Turn off heater switch and contact 707 customer care for assistance.
	Electrical connection or wiring issue	Stop using the water heater immediately. Turn off heater switch and engage a qualified electrician for assistance.
Excessive water leaking from pressure relief device	Incoming water pressure too high	Stop using the water heater immediately. Turn off heater switch and engage a qualified plumber for assistance.
	Excessive pressure built up in heater	Stop using the water heater immediately. Turn off heater switch and contact 707 customer care for assistance.

This image shows a single sheet of white paper with horizontal ruling lines. The lines are evenly spaced and run across the width of the page. There are no margins, text, or other markings on the paper.

Giving the best we can through
knowledge and understanding
www.chg.com.sg

Cheong Hock Guan Water Heater Centre Pte Ltd

76 Playfair Road, #03-03 LHK2 Building Singapore 367996

 6749 8885

 mail@chg.com.sg

 6749 8887

 www.chg.com.sg

VER 01 - 1218

